



Internal Combustion Engine Counterbalance Truck

H50 – H80 EVO

Capacity 5.0 – 8.0 t | Series 396

Sustained performance

- Top operating performance for large loads by means of powerful engines and lift mast control system
- Improved visibility through slim lift mast profile
- Minimal service times due to hydrostatic drive – no transmission, clutch, differential or drum brakes
- Safe and quick load handling due to 30 % reduction in lift mast torsion
- Shifting roof-mounted steel grid protects driver from falling loads when mast tilted

TECHNICAL DATA (According to VDI 2198)

| | Characteristics | | | | | | |
|-------------------|---------------------------------|--|---|-------------------------|-------------------------|--------------------------|--------------------------|
| | 1.1 | Manufacturer | | Linde | Linde | Linde | Linde |
| | 1.2 | Model | | H50 D | H60 D | H70 D | H80 D |
| | 1.2a | Series | | 396-03 | 396-03 | 396-03 | 396-03 |
| | 1.3 | Power Unit | | Diesel | Diesel | Diesel | Diesel |
| | 1.4 | Operation | | Seat | Seat | Seat | Seat |
| | 1.5 | Load capacity/Load | Q (t) | 5.0 | 6.0 | 7.0 | 8.0 |
| | 1.6 | Load centre | c (mm) | 600 | 600 | 600 | 600 |
| | 1.8 | Axle centre to fork face | x (mm) | 630 | 630 | 640 | 640 |
| | 1.9 | Wheelbase | y (mm) | 2200 | 2200 | 2200 | 2200 |
| Weights | 2.1 | Service weight | (kg) | 10105 | 10169 | 11381 | 12335 |
| | 2.2 | Axle load with load, front/rear | (kg) | 12689 / 2416 | 14250 / 1919 | 15995 / 2386 | 17844 / 2491 |
| | 2.3 | Axle load without load, front/rear | (kg) | 4894 / 5211 | 4895 / 5274 | 5050 / 6331 | 5335 / 7000 |
| Wheels/Tyres | 3.1 | Tyres rubber, SE, pneumatic, polyurethane | | SE | SE | SE twin | SE twin |
| | 3.2 | Tyre size, front | | 355 / 65 - 15 | 355 / 65 - 15 | 8.25 - 15 | 8.25 - 15 |
| | 3.3 | Tyre size, rear | | 8.25 - 15 | 8.25 - 15 | 315 / 70 - 15 (300 - 15) | 315 / 70 - 15 (300 - 15) |
| | 3.5 | Wheels, number front/rear (x = driven) | | 2x/2 | 2x/2 | 4x/2 | 4x/2 |
| | 3.6 | Track width, front | b10 (mm) | 1594 | 1594 | 1742 | 1742 |
| | 3.7 | Track width, rear | b11 (mm) | 1600 | 1600 | 1550 | 1550 |
| | Dimensions | 4.1 | Mast/fork carriage tilt, forward/backward | a/b (°) | 5.0/9.0 | 5.0/9.0 | 5.0/9.0 |
| 4.2 | | Height of mast, lowered | h1 (mm) | 2735 ¹⁾ | 2,735 ¹⁾ | 2738 ¹⁾ | 2737 ¹⁾ |
| 4.3 | | Free lift | h2 (mm) | 150 | 150 | 150 | 150 |
| 4.4 | | Lift | h3 (mm) | 3550 ²⁾ | 3,550 ²⁾ | 3150 ²⁾ | 3150 ²⁾ |
| 4.5 | | Height of mast, extended | h4 (mm) | 4448 | 4448 | 4245 | 4244 |
| 4.7 | | Height of overhead guard (cabin) | h6 (mm) | 2746 | 2746 | 2748 | 2746 |
| 4.8 | | Seat height relating to SIP/stand height | h7 (mm) | 1507 | 1507 | 1509 | 1508 |
| 4.12 | | Towing coupling height | h10 (mm) | 830 | 830 | 830 | 828 |
| 4.19 | | Overall length | l1 (mm) | 4719 | 4719 | 4729 | 4729 |
| 4.20 | | Length to fork face | l2 (mm) | 3519 | 3519 | 3529 | 3529 |
| 4.21 | | Overall width | b1/b2 (mm) | 1900/1870 ³⁾ | 1900/1870 ³⁾ | 2232/1870 ³⁾ | 2232/1870 ³⁾ |
| 4.22 | | Fork dimensions DIN ISO 2331 | s/e/l (mm) | 60 × 130 × 1200 | 60 × 130 × 1200 | 70 × 150 × 1200 | 70 × 150 × 1200 |
| 4.23 | | Fork carriage to ISO 2328, class/type A, B | | 4A | 4A | 4A | 4A |
| 4.24 | | Width of fork carriage | b3 (mm) | 1800 | 1800 | 1800 | 2180 |
| 4.31 | | Ground clearance, below mast | m1 (mm) | 208 | 204 | 208 | 204 |
| 4.32 | | Ground clearance, centre of wheelbase | m2 (mm) | 250 | 249 | 251 | 250 |
| 4.33 | | Load dimension b12 × l6 | b12 × l6 (mm) | - | - | - | - |
| 4.34 | | Aisle width predetermined load dimensions | Ast (mm) | - | - | - | - |
| 4.34.1 | | Aisle width for pallets 1000 × 1200 crossways | Ast (mm) | 5016 ⁴⁾ | 5016 ⁴⁾ | 5026 ⁴⁾ | 5026 ⁴⁾ |
| 4.34.2 | | Aisle width with pallet 800 × 1200 along forks | Ast (mm) | 5216 ⁴⁾ | 5216 ⁴⁾ | 5226 ⁴⁾ | 5226 ⁴⁾ |
| 4.35 | Turning radius | Wa (mm) | 3186 | 3186 | 3186 | 3186 | |
| 4.36 | Minimum pivoting point distance | b13 (mm) | 1061 | 1061 | 1061 | 1061 | |
| Performance | 5.1 | Travel speed, with/without load | (km/h) | 22/23 | 22/23 | 22/23 | 22/23 |
| | 5.2 | Lifting speed, with/without load | (m/s) | 0.54/0.54 | 0.54/0.54 | 0.49/0.53 | 0.49/0.53 |
| | 5.3 | Lowering speed, with/without load | (m/s) | 0.54/0.5 | 0.54/0.5 | 0.56/0.45 | 0.56/0.45 |
| | 5.5 | Tractive force, with/without load | (N) | 50000/35000 | 50000/35000 | 50000/37000 | 51000/41000 |
| | 5.7 | Climbing ability, with/without load | (%) | 32.0/36.0 | 30.0/36.0 | 28.0/35.0 | 26.0/34.0 |
| | 5.9 | Acceleration time, with/without load | (s) | 5.4/4.8 | 5.6/5.0 | 5.7/5.1 | 5.8/5.2 |
| | 5.10 | Service brake | | hydrostatic | hydrostatic | hydrostatic | hydrostatic |
| IC-Drive | 7.1 | Engine manufacturer/type | | Deutz TCD 4.1 L4 | Deutz TCD 4.1 L4 | Deutz TCD 4.1 L4 | Deutz TCD 4.1 L4 |
| | 7.2 | Engine performance according to DIN ISO 1585 | (kW) | 85 | 85 | 85 | 85 |
| | 7.3 | Rated speed | (1/min) | 2200 | 2200 | 2200 | 2200 |
| | 7.4 | Number of cylinders/displacement | (- / cm ³) | 4/4038 | 4/4038 | 4/4038 | 4/4038 |
| | 7.5 | Fuel consumption according to VDI cycle | (l/h) | 6.9 | 7.3 | 7.8 | 8.3 |
| Drive/Lift mechan | 8.1 | Type of drive control | | hydrost./stepl. | hydrost./stepl. | hydrost./stepl. | hydrost./stepl. |
| | 10.1 | Operating pressure for attachments | (bar) | 265 | 265 | 265 | 265 |
| | 10.2 | Oil flow for attachments | (l/min) | 95 | 95 | 95 | 95 |
| | 10.7 | Sound pressure level LpAZ (at the driver's seat) | (dB(A)) | 77 | 77 | 77 | 77 |
| | 10.8 | Towing coupling, design/type, DIN 15 170 | | similar to form H | similar to form H | similar to form H | similar to form H |

1) With 150 mm free lift

2) For alternative masts, refer to tables

3) front/rear

4) Including a 200 mm (min.) operating aisle clearance

TECHNICAL DATA (According to VDI 2198)

| | | | | | | | |
|-------------------|---------------------------------|--|---|-------------------------|-------------------------|-------------------------|-------------------------|
| Characteristics | 1.1 | Manufacturer | | Linde | Linde | Linde | Linde |
| | 1.2 | Model | | H80/900 D | H80/1100 D | H50 T | H60 T |
| | 1.2a | Series | | 396-03 | 396-03 | 396-03 | 396-03 |
| | 1.3 | Power Unit | | Diesel | Diesel | LPG | LPG |
| | 1.4 | Operation | | Seat | Seat | Seat | Seat |
| | 1.5 | Load capacity/Load | Q (t) | 8.0 | 8.0 | 5.0 | 6.0 |
| | 1.6 | Load centre | c (mm) | 900 | 1100 | 600 | 600 |
| | 1.8 | Axle centre to fork face | x (mm) | 670 | 680 | 630 | 630 |
| | 1.9 | Wheelbase | y (mm) | 2510 | 2810 | 2200 | 2200 |
| Weights | 2.1 | Service weight | (kg) | 14039 | 14873 | 9980 | 10031 |
| | 2.2 | Axle load with load, front/rear | (kg) | 19725/2314 | 20586/2287 | 12504/2476 | 14030/2001 |
| | 2.3 | Axle load without load, front/rear | (kg) | 6721/7318 | 7518/7355 | 4709/5271 | 4675/5356 |
| Wheels/Tyres | 3.1 | Tyres rubber, SE, pneumatic, polyurethane | | SE twin | SE twin | SE | SE |
| | 3.2 | Tyre size, front | | 8.25 - 15 | 315/70 - 15 (300 - 15) | 355/65 - 15 | 355/65 - 15 |
| | 3.3 | Tyre size, rear | | 315/70 - 15 (300 - 15) | 315/70 - 15 (300 - 15) | 8.25 - 15 | 8.25 - 15 |
| | 3.5 | Wheels, number front/rear (x = driven) | | 4x/2 | 4x/2 | 2x/2 | 2x/2 |
| | 3.6 | Track width, front | b10 (mm) | 1742 | 1752 | 1594 | 1594 |
| | 3.7 | Track width, rear | b11 (mm) | 1550 | 1550 | 1600 | 1600 |
| | Dimensions | 4.1 | Mast/fork carriage tilt, forward/backward | a/b (°) | 5.0/9.0 | 5.0/9.0 | 5.0/9.0 |
| 4.2 | | Height of mast, lowered | h1 (mm) | 2735 ¹⁾ | 2737 ¹⁾ | 2735 ¹⁾ | 2735 ¹⁾ |
| 4.3 | | Free lift | h2 (mm) | 150 | 150 | 150 | 150 |
| 4.4 | | Lift | h3 (mm) | 2750 ²⁾ | 2750 ²⁾ | 3550 ²⁾ | 3550 ²⁾ |
| 4.5 | | Height of mast, extended | h4 (mm) | 4144 | 4146 | 4448 | 4448 |
| 4.7 | | Height of overhead guard (cabin) | h6 (mm) | 2746 | 2747 | 2746 | 2746 |
| 4.8 | | Seat height relating to SIP/stand height | h7 (mm) | 1507 | 1508 | 1507 | 1507 |
| 4.12 | | Towing coupling height | h10 (mm) | 828 | 827 | 830 | 830 |
| 4.19 | | Overall length | l1 (mm) | 5629 | 6339 | 4719 | 4719 |
| 4.20 | | Length to fork face | l2 (mm) | 3829 | 4139 | 3519 | 3519 |
| 4.21 | | Overall width | b1/b2 (mm) | 2232/1870 ³⁾ | 2305/1870 ³⁾ | 1900/1870 ³⁾ | 1900/1870 ³⁾ |
| 4.22 | | Fork dimensions DIN ISO 2331 | s/e/l (mm) | 70 × 200 × 1800 | 80 × 200 × 2200 | 60 × 130 × 1200 | 60 × 130 × 1200 |
| 4.23 | | Fork carriage to ISO 2328, class/type A, B | | 4A | 4A | 4A | 4A |
| 4.24 | | Width of fork carriage | b3 (mm) | 2180 | 2400 | 1800 | 1800 |
| 4.31 | | Ground clearance, below mast | m1 (mm) | 201 | 208 | 208 | 204 |
| 4.32 | | Ground clearance, centre of wheelbase | m2 (mm) | 248 | 250 | 250 | 249 |
| 4.33 | | Load dimension b12 × l6 | b12 × l6 (mm) | 2000 × 2200 | 2000 × 2200 | - | - |
| 4.34 | | Aisle width predetermined load dimensions | Ast (mm) | 6580 | 6930 | - | - |
| 4.34.1 | | Aisle width for pallets 1000 × 1200 crossways | Ast (mm) | 5380 ⁴⁾ | 5730 ⁴⁾ | 5016 ⁴⁾ | 5016 ⁴⁾ |
| 4.34.2 | | Aisle width with pallet 800 × 1200 along forks | Ast (mm) | 5580 ⁴⁾ | 5930 ⁴⁾ | 5216 ⁴⁾ | 5216 ⁴⁾ |
| 4.35 | Turning radius | Wa (mm) | 3510 | 3850 | 3186 | 3186 | |
| 4.36 | Minimum pivoting point distance | b13 (mm) | 1240 | 1410 | 1061 | 1061 | |
| Performance | 5.1 | Travel speed, with/without load | (km/h) | 22/23 | 22/23 | 22/23 | 22/23 |
| | 5.2 | Lifting speed, with/without load | (m/s) | 0.49/0.53 | 0.49/0.53 | 0.51/0.53 | 0.51/0.53 |
| | 5.3 | Lowering speed, with/without load | (m/s) | 0.56/0.45 | 0.56/0.45 | 0.5/0.5 | 0.5/0.5 |
| | 5.5 | Tractive force, with/without load | (N) | 52000/46000 | 54000/50000 | 50000/35000 | 50000/35000 |
| | 5.7 | Climbing ability, with/without load | (%) | 24.0/34.0 | 23.0/34.0 | 32.0/35.0 | 30.0/35.0 |
| | 5.9 | Acceleration time, with/without load | (s) | 6.0/5.2 | 6.1/5.3 | 6.2/5.2 | 6.4/5.4 |
| | 5.10 | Service brake | | hydrostatic | hydrostatic | hydrostatic | hydrostatic |
| IC-Drive | 7.1 | Engine manufacturer/type | | Deutz TCD 4.1 L4 | Deutz TCD 4.1 L4 | VW CKPA | VW CKPA |
| | 7.2 | Engine performance according to DIN ISO 1585 | (kW) | 85 | 85 | 72 | 72 |
| | 7.3 | Rated speed | (1/min) | 2200 | 2200 | 2500 | 2500 |
| | 7.4 | Number of cylinders/displacement | (- / cm ³) | 4/4038 | 4/4038 | 6/3597 | 6/3597 |
| | 7.5 | Fuel consumption according to VDI cycle | (l/h) | 8.4 | 8.5 | 6.5 | 6.9 |
| Drive/Lift mechan | 8.1 | Type of drive control | | hydrost./stepl. | hydrost./stepl. | hydrost./stepl. | hydrost./stepl. |
| | 10.1 | Operating pressure for attachments | (bar) | 265 | 265 | 265 | 265 |
| | 10.2 | Oil flow for attachments | (l/min) | 95 | 95 | 95 | 95 |
| | 10.7 | Sound pressure level LpAZ (at the driver's seat) | (dB(A)) | 77 | 77 | 76 | 76 |
| | 10.8 | Towing coupling, design/type, DIN 15 170 | | similar to form H | similar to form H | similar to form H | similar to form H |

1) With 150 mm free lift

2) For alternative masts, refer to tables

3) front/rear

4) Including a 200 mm (min.) operating aisle clearance

TECHNICAL DATA (According to VDI 2198)

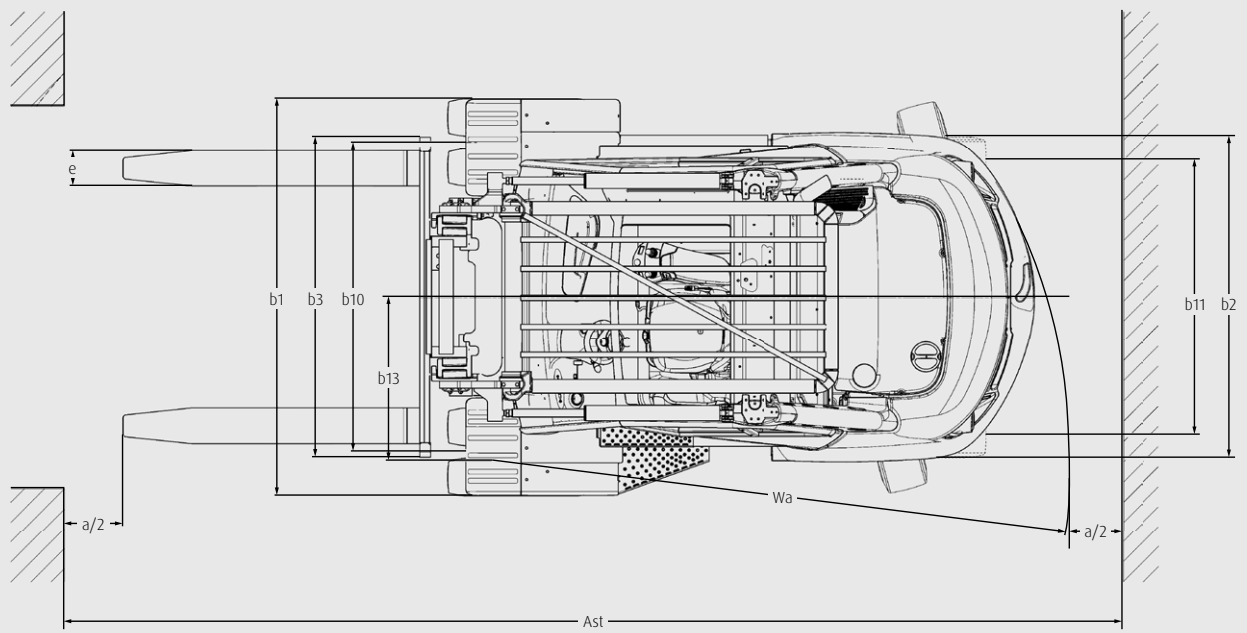
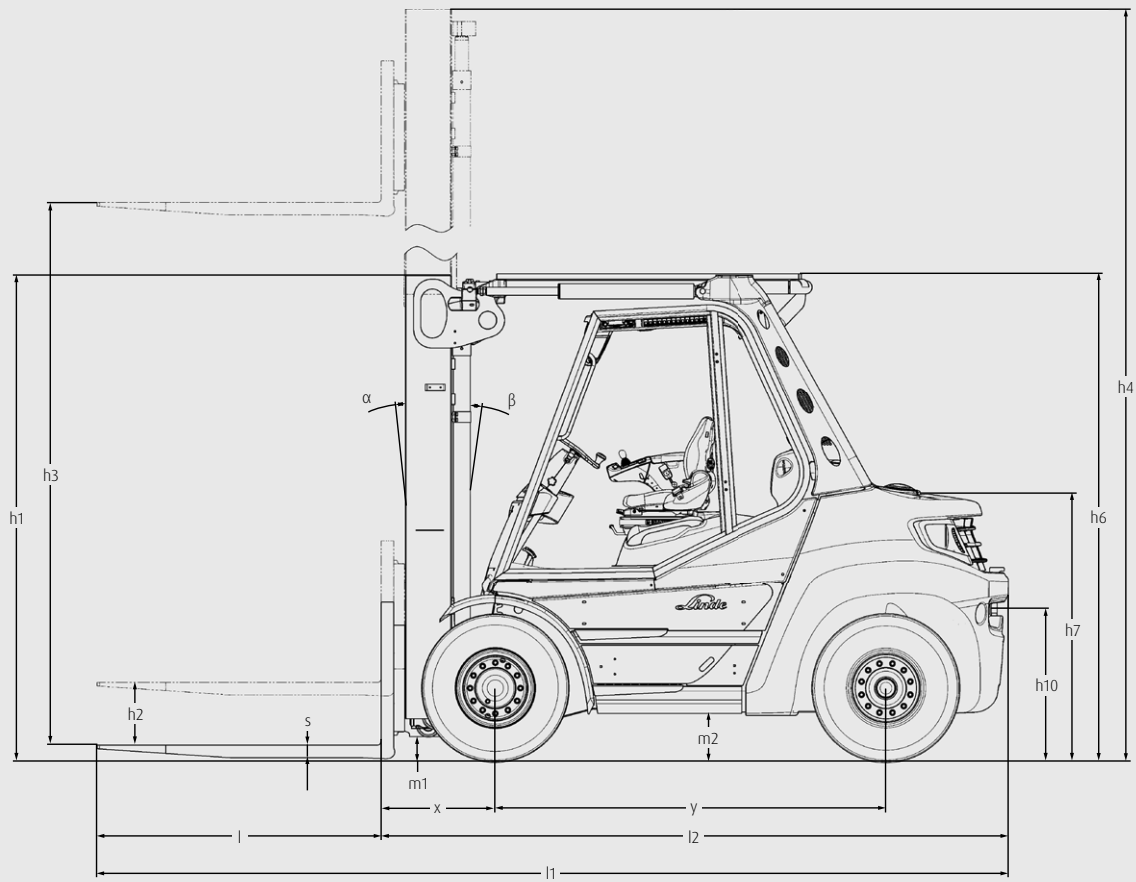
| | | | | | | | |
|-------------------|---------------------------------|--|---|-------------------------|-------------------------|-------------------------|-------------------------|
| Characteristics | 1.1 | Manufacturer | | Linde | Linde | Linde | Linde |
| | 1.2 | Model | | H70 T | H80 T | H80/900 T | H80/1100 T |
| | 1.2a | Series | | 396-03 | 396-03 | 396-03 | 396-03 |
| | 1.3 | Power Unit | | LPG | LPG | LPG | LPG |
| | 1.4 | Operation | | Seat | Seat | Seat | Seat |
| | 1.5 | Load capacity/Load | Q (t) | 7.0 | 8.0 | 8.0 | 8.0 |
| | 1.6 | Load centre | c (mm) | 600 | 600 | 900 | 1100 |
| | 1.8 | Axle centre to fork face | x (mm) | 640 | 640 | 670 | 680 |
| | 1.9 | Wheelbase | y (mm) | 2200 | 2200 | 2510 | 2810 |
| Weights | 2.1 | Service weight | (kg) | 11379 | 12210 | 13931 | 14748 |
| | 2.2 | Axle load with load, front/rear | (kg) | 15904/2475 | 17625/2585 | 19563/2368 | 20388/2360 |
| | 2.3 | Axle load without load, front/rear | (kg) | 4959/6420 | 5116/7094 | 6559/7372 | 7320/7428 |
| Wheels/Tyres | 3.1 | Tyres rubber, SE, pneumatic, polyurethane | | SE twin | SE twin | SE twin | SE twin |
| | 3.2 | Tyre size, front | | 8.25 - 15 | 8.25 - 15 | 8.25 - 15 | 315/70 - 15 (300 - 15) |
| | 3.3 | Tyre size, rear | | 315/70 - 15 (300 - 15) | 315/70 - 15 (300 - 15) | 315/70 - 15 (300 - 15) | 315/70 - 15 (300 - 15) |
| | 3.5 | Wheels, number front/rear (x = driven) | | 4x/2 | 4x/2 | 4x/2 | 4x/2 |
| | 3.6 | Track width, front | b10 (mm) | 1742 | 1742 | 1742 | 1752 |
| | 3.7 | Track width, rear | b11 (mm) | 1550 | 1550 | 1550 | 1550 |
| | Dimensions | 4.1 | Mast/fork carriage tilt, forward/backward | a/b (°) | 5.0/9.0 | 5.0/9.0 | 5.0/9.0 |
| 4.2 | | Height of mast, lowered | h1 (mm) | 2738 ¹⁾ | 2737 ¹⁾ | 2735 ¹⁾ | 2737 ¹⁾ |
| 4.3 | | Free lift | h2 (mm) | 150 | 150 | 150 | 150 |
| 4.4 | | Lift | h3 (mm) | 3150 ²⁾ | 3150 ²⁾ | 2750 ²⁾ | 2750 ²⁾ |
| 4.5 | | Height of mast, extended | h4 (mm) | 4245 | 4244 | 4144 | 4146 |
| 4.7 | | Height of overhead guard (cabin) | h6 (mm) | 2748 | 2746 | 2746 | 2747 |
| 4.8 | | Seat height relating to SIP/stand height | h7 (mm) | 1509 | 1508 | 1507 | 1508 |
| 4.12 | | Towing coupling height | h10 (mm) | 830 | 828 | 828 | 827 |
| 4.19 | | Overall length | l1 (mm) | 4729 | 4729 | 5629 | 6339 |
| 4.20 | | Length to fork face | l2 (mm) | 3529 | 3529 | 3829 | 4139 |
| 4.21 | | Overall width | b1/b2 (mm) | 2232/1870 ³⁾ | 2232/1870 ³⁾ | 2232/1870 ³⁾ | 2305/1870 ³⁾ |
| 4.22 | | Fork dimensions DIN ISO 2331 | s/e/l (mm) | 70 × 150 × 1200 | 70 × 150 × 1200 | 70 × 200 × 1800 | 80 × 200 × 2200 |
| 4.23 | | Fork carriage to ISO 2328, class/type A, B | | 4A | 4A | 4A | 4A |
| 4.24 | | Width of fork carriage | b3 (mm) | 1800 | 2180 | 2180 | 2400 |
| 4.31 | | Ground clearance, below mast | m1 (mm) | 208 | 204 | 201 | 208 |
| 4.32 | | Ground clearance, centre of wheelbase | m2 (mm) | 251 | 250 | 248 | 250 |
| 4.33 | | Load dimension b12 × l6 | b12 × l6 (mm) | - | - | 2000 × 2200 | 2000 × 2200 |
| 4.34 | | Aisle width predetermined load dimensions | Ast (mm) | - | - | 6580 | 6930 |
| 4.34.1 | | Aisle width for pallets 1000 × 1200 crossways | Ast (mm) | 5026 ⁴⁾ | 5026 ⁴⁾ | 5380 ⁴⁾ | 5730 ⁴⁾ |
| 4.34.2 | | Aisle width with pallet 800 × 1200 along forks | Ast (mm) | 5226 ⁴⁾ | 5226 ⁴⁾ | 5580 ⁴⁾ | 5930 ⁴⁾ |
| 4.35 | Turning radius | Wa (mm) | 3186 | 3186 | 3510 | 3850 | |
| 4.36 | Minimum pivoting point distance | b13 (mm) | 1061 | 1061 | 1240 | 1410 | |
| Performance | 5.1 | Travel speed, with/without load | (km/h) | 22/23 | 22/23 | 22/23 | 22/23 |
| | 5.2 | Lifting speed, with/without load | (m/s) | 0.43/0.54 | 0.4/0.54 | 0.4/0.54 | 0.4/0.54 |
| | 5.3 | Lowering speed, with/without load | (m/s) | 0.56/0.48 | 0.56/0.48 | 0.56/0.48 | 0.56/0.48 |
| | 5.5 | Tractive force, with/without load | (N) | 50000/37000 | 51000/41000 | 52000/46000 | 54000/50000 |
| | 5.7 | Climbing ability, with/without load | (%) | 27.0/34.0 | 25.0/34.0 | 23.0/34.0 | 22.0/34.0 |
| | 5.9 | Acceleration time, with/without load | (s) | 6.6/5.6 | 6.8/5.8 | 7.0/6.0 | 7.2/6.2 |
| | 5.10 | Service brake | | hydrostatic | hydrostatic | hydrostatic | hydrostatic |
| IC-Drive | 7.1 | Engine manufacturer/type | | VW CKPA | VW CKPA | VW CKPA | VW CKPA |
| | 7.2 | Engine performance according to DIN ISO 1585 | (kW) | 72 | 72 | 72 | 72 |
| | 7.3 | Rated speed | (1/min) | 2500 | 2500 | 2500 | 2500 |
| | 7.4 | Number of cylinders/displacement | (- / cm ³) | 6/3597 | 6/3597 | 6/3597 | 6/3597 |
| | 7.5 | Fuel consumption according to VDI cycle | (l/h) | 7.3 | 7.8 | 8.2 | 8.6 |
| Drive/Lift mechan | 8.1 | Type of drive control | | hydrost./stepl. | hydrost./stepl. | hydrost./stepl. | hydrost./stepl. |
| | 10.1 | Operating pressure for attachments | (bar) | 265 | 265 | 265 | 265 |
| | 10.2 | Oil flow for attachments | (l/min) | 95 | 95 | 95 | 95 |
| | 10.7 | Sound pressure level LpAZ (at the driver's seat) | (dB(A)) | 76 | 76 | 76 | 76 |
| | 10.8 | Towing coupling, design/type, DIN 15 170 | | similar to form H | similar to form H | similar to form H | similar to form H |

1) With 150 mm free lift

2) For alternative masts, refer to tables

3) front/rear

4) Including a 200 mm (min.) operating aisle clearance



MAST TABLES

STANDARD MAST (in mm)

| Series | 195 | | | | | | | | | | | | | |
|---------------------|----------------------|---------|----------------------|---------|----------------------|---------|----------------------|---------|----------------------|---------|----------------------|---------|----------------------|---------|
| Lift | h3: 3550 | | h3: 3850 | | h3: 4150 | | h3: 4550 | | h3: 4850 | | h3: 5250 | | h3: 6050 | |
| Height measurements | h1: 2735 h4: 4448 | h2: 150 | h1: 2885 h4: 4748 | h2: 150 | h1: 3035 h4: 5048 | h2: 150 | h1: 3235 h4: 5448 | h2: 150 | h1: 3385 h4: 5748 | h2: 150 | h1: 3585 h4: 6148 | h2: 150 | h1: 3985 h4: 6948 | h2: 150 |
| Model | | | | | | | | | | | | | | |
| H50 | ○ | | ○ | | ○ | | ○ | | ○ | | ○ | | ○ | |
| H60 | ○ | | ○ | | ○ | | ○ | | ○ | | ○ | | ○ | |

| Series | 195 | | | | | | | | | | | | | |
|---------------------|----------------------|---------|----------------------|---------|----------------------|---------|----------------------|---------|----------------------|---------|----------------------|---------|----------------------|---------|
| Lift | h3: 3150 | | h3: 3450 | | h3: 3750 | | h3: 4150 | | h3: 4450 | | h3: 4850 | | h3: 5650 | |
| Height measurements | h1: 2735 h4: 4243 | h2: 150 | h1: 2885 h4: 4543 | h2: 150 | h1: 3035 h4: 4843 | h2: 150 | h1: 3235 h4: 5243 | h2: 150 | h1: 3385 h4: 5543 | h2: 150 | h1: 3585 h4: 5943 | h2: 150 | h1: 3985 h4: 6743 | h2: 150 |
| Model | | | | | | | | | | | | | | |
| H70 | ○ | | ○ | | ○ | | ○ | | ○ | | ○ | | ○ | |
| H80 | ○ | | ○ | | ○ | | ○ | | ○ | | ○ | | ○ | |

| Series | 195 | | | | | | | | | | | | | |
|---------------------|----------------------|---------|----------------------|---------|----------------------|---------|----------------------|---------|----------------------|---------|----------------------|---------|----------------------|---------|
| Lift | h3: 2750 | | h3: 3050 | | h3: 3350 | | h3: 3750 | | h3: 4050 | | h3: 4450 | | h3: 5250 | |
| Height measurements | h1: 2735 h4: 4145 | h2: 150 | h1: 2885 h4: 4445 | h2: 150 | h1: 3035 h4: 4745 | h2: 150 | h1: 3235 h4: 5145 | h2: 150 | h1: 3385 h4: 5445 | h2: 150 | h1: 3585 h4: 5845 | h2: 150 | h1: 3985 h4: 6645 | h2: 150 |
| Model | | | | | | | | | | | | | | |
| H80 / 900 | ○ | | ○ | | ○ | | ○ | | ○ | | ○ | | ○ | |
| H80 / 1100 | ○ | | ○ | | ○ | | ○ | | ○ | | ○ | | ○ | |

TRIPLEX MAST (in mm)

| Series | 195 | | | | | | | | | | | | | |
|---------------------|----------------------|----------|----------------------|----------|----------------------|----------|----------------------|----------|----------------------|----------|----------------------|----------|----------------------|----------|
| Lift | h3: 4770 | | h3: 5370 | | h3: 5820 | | h3: 6420 | | h3: 4705 | | h3: 5155 | | h3: 5605 | |
| Height measurements | h1: 2712 h4: 5662 | h2: 1755 | h1: 2862 h4: 6262 | h2: 1905 | h1: 3012 h4: 6712 | h2: 2055 | h1: 3212 h4: 7312 | h2: 2255 | h1: 2708 h4: 5793 | h2: 1555 | h1: 2858 h4: 6243 | h2: 1705 | h1: 3008 h4: 6693 | h2: 1855 |
| Model | | | | | | | | | | | | | | |
| H50 | ○ | | ○ | | ○ | | ○ | | — | | — | | — | |
| H60 | ○ | | ○ | | ○ | | ○ | | — | | — | | — | |
| H70 | — | | — | | — | | — | | ○ | | ○ | | ○ | |
| H80 | — | | — | | — | | — | | ○ | | ○ | | ○ | |

| Series | 195 | | | |
|---------------------|----------------------|----------|----------------------|----------|
| Lift | h3: 6205 | | h3: 7255 | |
| Height measurements | h1: 3208 h4: 7293 | h2: 2055 | h1: 3558 h4: 8343 | h2: 2405 |
| Model | | | | |
| H50 | — | | — | |
| H60 | — | | — | |
| H70 | ○ | | ○ | |
| H80 | ○ | | ○ | |

| Series | 195 | | | | | | | | | | | | | |
|---------------------|----------------------|----------|----------------------|----------|----------------------|----------|----------------------|----------|----------------------|----------|----------------------|----------|----------------------|----------|
| Lift | h3: 3955 | | h3: 4405 | | h3: 4855 | | h3: 5455 | | h3: 5905 | | h3: 7105 | | h3: 7705 | |
| Height measurements | h1: 2712 h4: 5347 | h2: 1255 | h1: 2862 h4: 5797 | h2: 1405 | h1: 3012 h4: 6247 | h2: 1555 | h1: 3212 h4: 6847 | h2: 1755 | h1: 3362 h4: 7297 | h2: 1905 | h1: 3762 h4: 8497 | h2: 2305 | h1: 3962 h4: 9097 | h2: 2505 |
| Model | | | | | | | | | | | | | | |
| H80 / 900 | ○ | | ○ | | ○ | | ○ | | ○ | | ○ | | ○ | |
| H80 / 1100 | ○ | | ○ | | ○ | | ○ | | ○ | | ○ | | ○ | |

○ Optional equipment

— Not available

h1: Height of mast, lowered

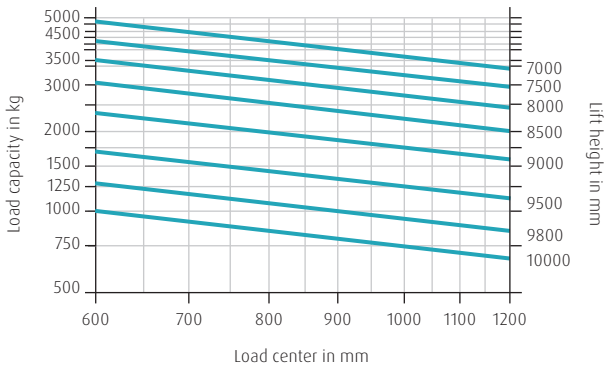
h2: Free lift

h3: Lift

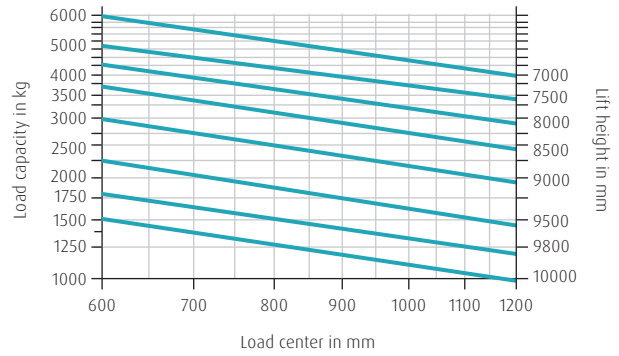
h4: Height of mast, extended

LOAD CAPACITY

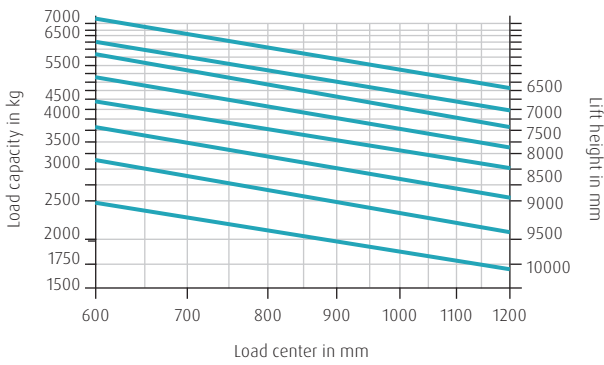
H50



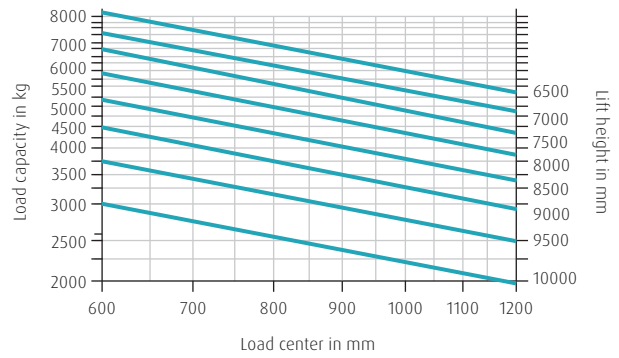
H60



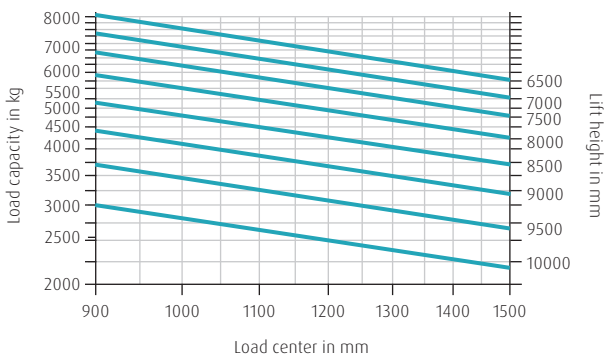
H70



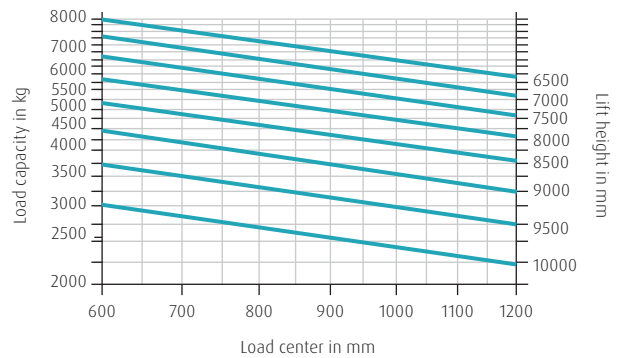
H80



H80 / 900



H80 / 1100



STANDARD AND OPTIONAL EQUIPMENT

| Model/Equipment | | H50 - H80 / 1100 D | H50 - H80 / 1100 T |
|--|--|--------------------|--------------------|
| Workplace | Ergonomic and save truck access due low entry step and handle bar at a-pillar and bonnet | ● | ● |
| | Innovative decoupling concept for lowest human vibrations | ● | ● |
| | Tilt adjustable steering column | ● | ● |
| | Interior light | ● | ● |
| | 12 volt socket | ● | ● |
| | Overhead guard comfort for maximum head clearance | ● | ● |
| | Operator's seat - mechanical quick weight adjustment | ● | ● |
| | Various seating options such as heating, air suspension, active seat ventilation, longitudinal suspension | ○ | ○ |
| | Operators seat - swiveling seat | ○ | ○ |
| | Glare-free display, control lights for all major functions | ● | ● |
| | Top screen armoured glass | ○ | ○ |
| | Cabin doors with openable window | ○ | ○ |
| | Din A4 illuminated clipboard | ○ | ○ |
| | Warm water heater / air condition including defog function and rear window heater | ○ | ○ |
| Radio, DAB+, MP3 Player including bluetooth hands-free equipment | ○ | ○ | |
| Operation / Load Handling | Linde Hydrostatic Drive - for high productivity and low fuel consumption | ● | ● |
| | Deutz Diesel Engine EU 2016 / 1628 Stage 5* | ● | — |
| | DEF - injection (AdBlue®), particle filter, oxidation catalysts, exhaust gas recirculation | ● | — |
| | Volkswagen LPG engine including 3-way catalyst | — | ○ |
| | LPG tank including fill level indicator in the display | — | ● |
| | Engine air filter including safety elements | ● | ● |
| | Linde Engine Protection System (LEPS) - warning, speed reduction under critical engine conditions | ● | ● |
| | Hydraulic parking brake | ● | ● |
| | Oversized, variable displacement pump for lifting function - for low fuel consumption, low noise level and emissions | ● | ● |
| | Hydraulic filter concept - realizing 6000 hour hydraulic-oil change interval | ● | ● |
| | Power settings: Efficiency, economy, performance | ● | ● |
| | Super Elastic (SE) tyres | ● | ● |
| | Closed Shoulder tyres CS 20 | ○ | ○ |
| | Pneumatic tyres | ○ | ○ |
| Antistatic, non marking tyres | ○ | ○ | |
| Anti-spray mudflaps front and rear | ○ | ○ | |
| Mast | Linde Torsion Support System reduces the torsional stress | ● | ● |
| | Top mounted tilting cylinders | ● | ● |
| | Best visibility through nested mast profiles on standard and triplex masts | ● | ● |
| | Electronic damped tilt stop | ● | ● |
| Attachments / Forks | Hydraulic accumulator for high driving comfort and less wear | ○ | ○ |
| | Reinforced Linde forks - easy adjustable and long life time | ○ | ○ |
| | Different integrated attachments | ○ | ○ |
| Safety | Street sweeper preparation | ○ | ○ |
| | Linde Curve Assist - automatic drive speed reduction when cornering | ● | ● |
| | Electrical seat belt monitoring - visual and acoustic feedback | ● | ● |
| | BlueSpot and TruckSpot - optical warning signal for pedestrians and drivers | ○ | ○ |
| | Load weight indicator including assistance function | ○ | ○ |
| | Linde Safety Pilot - load-dependent travel and lifting speed intervention plus additional functions | ○ | ○ |
| Digitalisation | Linde Safety Guard - truck to truck warning and truck to pedestrian warning | ○ | ○ |
| | Speed limitations (via switch, indoor-outdoor, load depending) | ○ | ○ |
| | Data Transmission Online | ○ | ○ |
| | Data Transmission Wifi | ○ | ○ |
| | Linde connect:desk - local fleet management with different functional modules | ○ | ○ |
| | Linde connect:cloud - fleet management as a service (hosted version) | ○ | ○ |
| Operation / Load Handling | Pre-Operation-Check - individualizable daily check protocol for operational readiness | ○ | ○ |
| | Truck Call App - coordination of transport orders | ○ | ○ |
| | Double pedal control - stepless acceleration and fast reversing | ● | ● |
| | Single pedal control - stepless acceleration | ○ | ○ |
| Operation / Load Handling | Linde Load Control - central levers fully integrated in the armrest for precise control of all hydraulic functions | ● | ● |
| | Individual Lever System | ○ | ○ |

● Standard equipment ○ Optional equipment — Not available

* EPA / CARB Stage 4 Final

CHARACTERISTICS



Suspended cab

Ergonomics

- Outstanding ergonomic operating concept
- Spacious cab with generous legroom, comfortable seats and smart arrangement of instruments
- Decoupled drive unit and suspended cab minimize vibration and provide healthy working conditions
- Simpler processes through forward or reverse travel with both pedals, and automatic stop if foot leaves pedal



Hydraulic direct drive

Handling

- Powerful and precise operation thanks to hydrostatic drive
- Fast, eco-friendly handling processes guaranteed by high-torque, fuel-efficient engines with low exhaust emissions
- Exact load handling by fingertip with Linde Load Control
- Exceptional residual capacity for transport of very heavy loads



Protective overhead guard

Safety

- Linde torsion support provides excellent stability and up to 30 % reduction in lift mast rotations at high load heights
- Unrivalled operator safety thanks to Linde Protector Frame and roof guard against falling loads
- Increased safety via automatic speed reduction during cornering
- Slim lift mast results in optimum all-round visibility



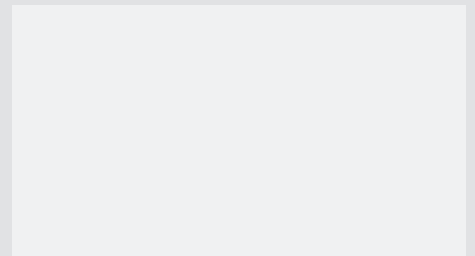
Hydraulic oil change

Service

- Long maintenance intervals ensure maximum availability and minimal servicing costs
- First engine oil change and steering axle / mast lubrication not before 1000 operating hours
- Hydraulic oil change only after 6000 hours
- Absence of high-maintenance parts such as transmission, clutch and drum brakes further reduces service requirements

Subject to modification in the interest of progress. Illustrations and technical details could include options and not binding for actual constructions. All dimensions subject to usual tolerances.

Presented by:



Linde Material Handling GmbH
Carl-von-Linde-Platz | 63743 Aschaffenburg | Germany
Phone + 49 6021 99 0 | Fax + 49 6021 99 1570
www.linde-mh.com | info@linde-mh.com

Printed in Germany | 754.e.3.0520.IndJ.se